



# YOUR VOTE. YOUR VOICE.

June 7, 2022 • California Primary Election

**ARE YOU SIGNED  
UP TO VOTE?**

**May 23, 2022**

Last day to register to vote in this election.

**June 7, 2022**

**ELECTION DAY** Your polling place is open from  
7:00 a.m. to 8:00 p.m.

## GET READY:

- Register to vote by **May 23** at [registertovote.ca.gov](http://registertovote.ca.gov).
- Check your registration to make sure it's up to date. If your signature has changed over time, then re-register to update your signature at [voterstatus.sos.ca.gov](http://voterstatus.sos.ca.gov).
- If you want to get voting materials in a language other than English, make that choice at [voterstatus.sos.ca.gov](http://voterstatus.sos.ca.gov).

## WHAT'S **NEW** FOR VOTERS

The state of California wants to make it easier to vote. **Now, every registered voter in California will receive a ballot in the mail** about a month before Election Day. You can choose to return the ballot by mail, drop it off, or instead vote in person. Read pages 3-4 for more details.

### No Longer in Prison?

Once you have been released from prison in California your right to vote is automatically restored – you just need to **register to vote**. You may vote while you are on parole, but cannot vote if you are currently serving a sentence in state or federal prison.

Esta guía también está disponible en español ■ 本指南也有中文版

Hướng dẫn này cũng có sẵn bằng tiếng Việt ■ 이 안내서는 한국어로도 제공됩니다

Visit [easyvoterguide.org](http://easyvoterguide.org) to download this guide in  
English, Spanish, Chinese, Vietnamese, and Korean.

This guide is a collaboration of the League of Women Voters® of California Education Fund and the California State Library.

# ★ About the June 7, 2022 Primary Election

## How the Statewide Primary Election Works in California

In this “primary” election, voters will choose which candidates will move on to the “general” election in November. Who you vote for depends on which “districts” you live in. In California, these district lines get redrawn every ten years by an independent commission based on changes in the Census. In this election, you may see changes as to who you are voting for and where you vote.

For the following offices you may choose any candidate on your ballot, from any political party. The two candidates with the most votes will run against each other in November. It is possible that these two candidates could be from the same political party.

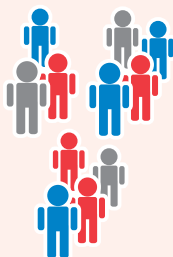
### Offices that represent everyone in California (elected for a four-year term)

- **Governor** – **The highest elected official in California:** Oversees most state departments and agencies. Prepares annual state budget. Approves or rejects new state laws.
- **Lieutenant Governor** – **Next in line:** Becomes Governor if the elected Governor leaves office. Has a tie-breaking vote in the State Senate. Serves on boards and commissions.
- **Secretary of State** – **Head of elections and record keeping:** Coordinates statewide elections and oversees election laws. Also keeps records about new corporations and businesses and other state databases.
- **Controller** – **The state’s bookkeeper:** Keeps track of how the state’s money is spent. Issues most checks from the state and manages collection of money due to the state. Reports on finances of state and local governments.
- **Treasurer** – **The state’s banker:** Manages the state’s investments and assets. Coordinates the sale of state bonds.
- **Attorney General** – **The state’s top lawyer:** Makes sure laws are enforced the same way across the state. Manages the state Department of Justice. Oversees sheriffs and district attorneys.
- **Insurance Commissioner** – **Insurance overseer:** Manages the state Department of Insurance. Enforces laws that insurance companies must follow.
- **Superintendent of Public Instruction** – **Head of public schools:** Manages the state Department of Education. Provides leadership and assistance to all public schools in California. Enforces education regulations.



### Offices that represent you in national government

- **U.S. Senator**  
(6-Year term)
- **Representative in U.S. Congress**  
(2-Year term)



### Offices that represent you in state government

- **State Senator** (4-Year term; even-numbered districts will be voted on in this election)
- **State Assembly Member** (2-Year term)
- **State Board of Equalization** (state tax commission; 4-Year term)

# ★ Ways to Vote

This year you have more options to vote safely and easily. The biggest change is that **every registered voter in California will receive a ballot in the mail** a month before the election.

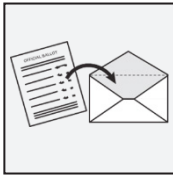
There are **3 ways to vote**. You can choose to **mail back your ballot, or drop it off, or you can vote in person** at a Voting Location.

# 1

## VOTE-BY-MAIL

**MAIL YOUR BALLOT BACK EARLY!** You can fill it in and mail it back as soon as you receive it.

**No stamp? No problem.** You do not need a stamp to mail back your ballot.



**Mark your ballot and seal it inside the envelope provided**

**Follow the directions** on the ballot to mark your choices.

**Check** that you are using the return envelope with your name on it.

**Put** your ballot into the envelope & **seal**. Only 1 ballot in each envelope.



**Sign and date the envelope**

**Date and sign** your name carefully on the back of the envelope using ink.



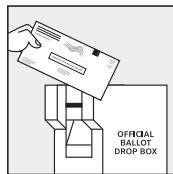
**Return your ballot on time**

**Mail your ballot back early** because it must be *postmarked* by Election Day, June 7.

# 2

## OR DROP OFF YOUR BALLOT

If you decide to hand in your ballot instead of mailing it, you must drop it off no later than **8PM on Election Day, June 7**.



Drop off your ballot **at any Voting Location** or **secure Ballot Dropbox** in your county.

For details and locations check [caearlyvoting.sos.ca.gov](https://caearlyvoting.sos.ca.gov).



**Visit [votersedge.org](https://votersedge.org) to see what will be on your ballot.**  
**It's easy. Just enter your home address.**

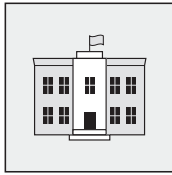


**MADE A MISTAKE? YOU CAN GET A REPLACEMENT BALLOT.**

To get a new ballot contact your **County Elections Office** before Election Day or go to your **Voting Location** when it opens and ask for a replacement.

## 3

### VOTE IN PERSON



At in-person Voting Locations you can:

- Vote in-person.
- Drop off your completed ballot.
- Vote with an accessible voting machine.
- Get help and voting materials in multiple languages.

**Early voting**, starting before Election Day, will be available in some locations.

Find **Early Voting and Ballot Dropbox** locations at [caearlyvoting.sos.ca.gov](https://caearlyvoting.sos.ca.gov).

Find your **Voting Location** at [findmypollingplace.sos.ca.gov](https://findmypollingplace.sos.ca.gov).

### DO YOU LIVE IN A “VOTER’S CHOICE ACT” COUNTY?

Check here: [bit.ly/VotersChoiceCounties](https://bit.ly/VotersChoiceCounties).

If so, then you may vote at any voting location in the county. Many will open starting Saturday, May 28 but some will open earlier. Or drop off your ballot at any secure Ballot Dropbox starting Tuesday, May 10. Check locations and hours at [caearlyvoting.sos.ca.gov](https://caearlyvoting.sos.ca.gov).



**TRACK MY  
BALLOT**

After returning your ballot, check [WheresMyBallot.sos.ca.gov](https://WheresMyBallot.sos.ca.gov) to find out where your ballot is in the process and when it has been accepted.

### MISSED THE MAY 23 VOTER REGISTRATION DEADLINE? NO PROBLEM! YOU CAN STILL VOTE IN THIS ELECTION!

If you missed the deadline, go to any **Voting Location**. You can register and vote on the same day – all the way up through Election Day.



- If possible, find your assigned location at [findmypollingplace.sos.ca.gov](https://findmypollingplace.sos.ca.gov). Go to that Voting Location to make sure you get a ballot with all your local contests.
- **Same-day register and vote from home.** If you need to register after May 23 and want to vote from home, contact your County Elections Office to find out how to register and get a vote by mail ballot through Election Day. Check [sos.ca.gov/county-elections-offices](https://sos.ca.gov/county-elections-offices).

### ABOUT THE EASY VOTER GUIDE

The *Easy Voter Guide* is made possible in part by the U.S. Institute of Museum and Library Services under the provisions of the Library Services and Technology Act, administered in California by the State Librarian. The League of Women Voters® of California Education Fund is a 501(c)(3) nonpartisan organization that encourages informed and active participation in government and works to increase understanding of major public policy issues. Please send questions or suggestions about this guide to [easyvoter@lwc.org](mailto:easyvoter@lwc.org).



**Give your opinion about this guide at  
[easyvoterguide.org](https://easyvoterguide.org)**