



Your Voice. Every Vote. Our Future.

11-Day Vote Centers  
Open August 16 to August 26

4-Day Vote Centers  
Open August 23 to August 26

All Vote Centers  
Open Election Day, August 26  
7:00 a.m. to 8:00 p.m.

Check Vote Center  
Locations and Hours  
at [www.voteinfo.net](http://www.voteinfo.net)

.....  
Registration Deadline  
August 11, 2025  
.....

Quick • Easy • Convenient

This election, every active registered voter will automatically receive a Vote-by-Mail ballot in the mail.

Additional Information Inside  
.....

Request Language Assistance

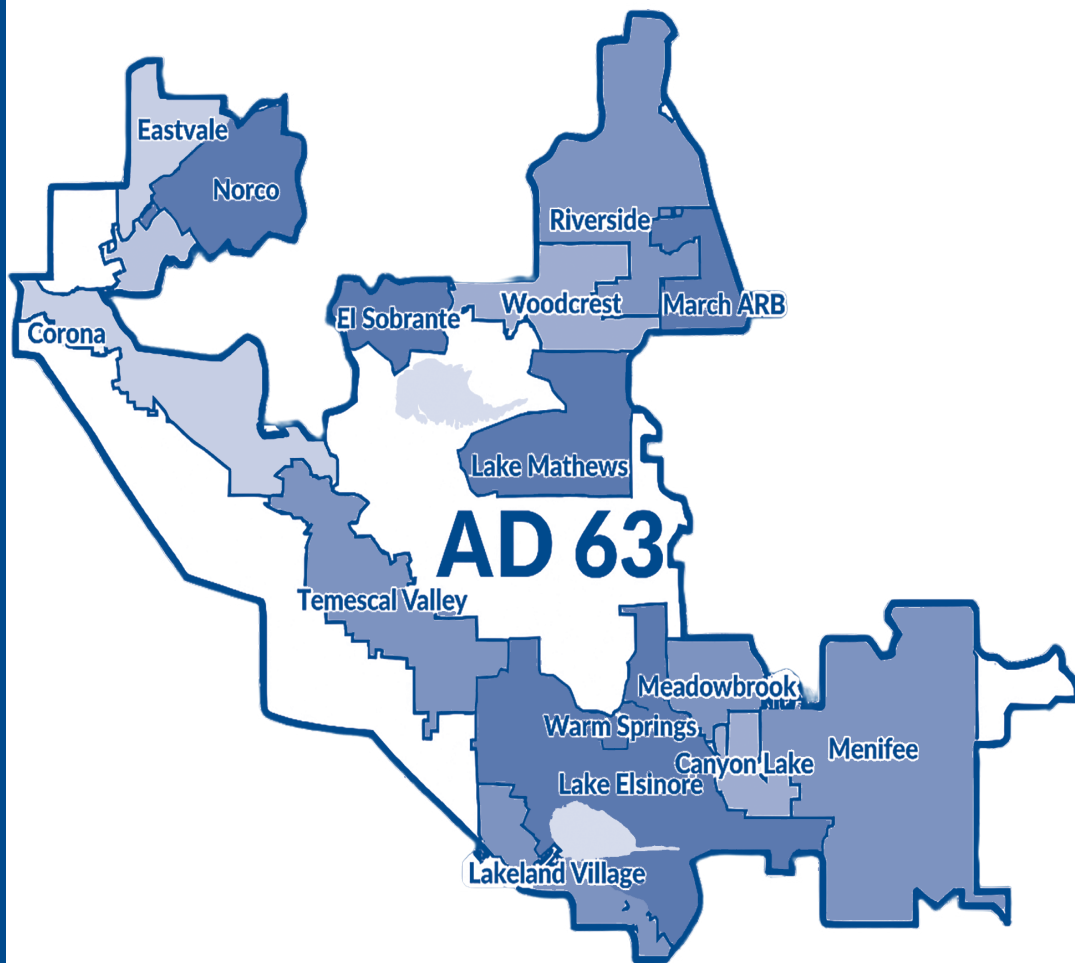
Submit form on Back Cover to receive election material translated in available selected languages.

#### AVISO IMPORTANTE

Una traducción en Español de esta Guía de Información del Condado Para el Votante puede obtenerse en la oficina del Registro de Votantes llamando al (951) 486- 7200 o (800) 773-VOTE (8683) o visite nuestro sitio web [www.voteinfo.net/es](http://www.voteinfo.net/es)

# Assembly District 63 Special General Election

*Tuesday, August 26, 2025*  
*County Voter Information Guide*



#### COUNTY OF RIVERSIDE REGISTRAR OF VOTERS

2720 Gateway Drive, Riverside, CA 92507-0918  
(951) 486-7200 • (800) 773-VOTE (8683) • California Relay Service (Dial 711)  
Mailing Address: 2724 Gateway Drive, Riverside, CA 92507-0918  
[www.voteinfo.net](http://www.voteinfo.net)



## Important Dates

### JULY

Sun	Mon	Tue	Wed	Thu	Fri	Sat
		1	2	3	4	5
6	7	8	9	10	11	12
13	14	15	16	17	18	19
20	21	22	23	24	25	26
27	28	29	30	31		

### AUGUST

Sun	Mon	Tue	Wed	Thu	Fri	Sat
					1	2
3	4	5	6	7	8	9
10	11	12	13	14	15	16
17	18	19	20	21	22	23
24	25	26	27	28	29	30
31						

## More Days, More Ways to Vote!

#### July 28<sup>th</sup>

All eligible registered voters will begin receiving their ballot in the mail this day

Vote-by-Mail Drop-Off Locations open throughout Riverside County

#### August 11<sup>th</sup>

Registration deadline

#### August 16<sup>th</sup>

11-Day Vote Centers open for early in-person voting in Riverside County

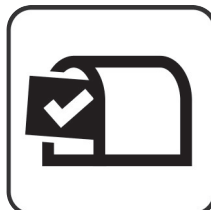
#### August 23<sup>rd</sup>

4-Day Vote Centers open for in-person voting throughout Riverside County

#### August 26<sup>th</sup>

Election Day!

#### Mail



#### Drop-Off Location



#### Vote Center



#### Registrar of Voters Office



Track the status of your ballot!  
Register to receive updates at:  
[www.WheresMyBallot.sos.ca.gov](http://www.WheresMyBallot.sos.ca.gov)



For more information visit [www.voteinfo.net](http://www.voteinfo.net) or call  
(951) 486-7200 or (800) 773-VOTE (8683)



# RivCo VOTE

**Your Voice. Every Vote. Our Future.**

ART TINOCO  
REGISTRAR OF VOTERS

MATTHEW CEBALLOS  
ASSISTANT REGISTRAR OF VOTERS

Dear County of Riverside Voter,

Election Day for Assembly District 63 Special General Election is just around the corner on August 26, 2025! Your County Voter Information Guide is here, providing essential details for voting, including instructions on marking your ballot, candidate information, a sample ballot, and other important election details to review before you vote. Tip: You can mark your sample ballot and bring it with you to any Vote Center for easy reference.

Starting July 28, 2025, ballots will be mailed to all active registered voters in Assembly District 63. You can check your registration at [voterstatus.sos.ca.gov](https://voterstatus.sos.ca.gov) or register at [registertovote.ca.gov](https://registertovote.ca.gov).

Vote at any Vote Center. We have more days and more ways to cast your ballot!

- **Returning Your Ballot:** You may drop off your ballot at any secure ballot Drop-Off Location starting July 28, 2025, or mail your ballot via USPS (no postage needed).
- **Receiving Your Ballot:** Your ballot must be received by the Registrar of Voters by Election Day or postmarked on Election Day and received within seven days (September 2, 2025).
- **Tracking Your Ballot:** Register at [WheresMyBallot.sos.ca.gov](https://WheresMyBallot.sos.ca.gov).

**Early Voting:** Vote in person at the Registrar of Voters office starting July 28, 2025, 8:00 a.m. to 5:00 p.m. Hours change on August 16 - 17, and August 23 - 24 to 9:00 a.m. to 5:00 p.m. For a list of locations and hours, visit [voteinfo.net](https://voteinfo.net).

**Election Day:** All Vote Centers, including the Registrar of Voters office, will be open from 7:00 a.m. to 8:00 p.m.

The voter registration deadline is August 11, 2025. For more information or questions, call us at (951) 486-7200.

Thank you for participating in the democratic process!

Sincerely,

Art Tinoco  
Registrar of Voters

2724 GATEWAY DRIVE  
RIVERSIDE, CA 92507-0918  
MAIN (951) 486-7200  
FAX (951) 486-7335  
CA RELAY SERVICE (DIAL 711)  
VOTEINFO.NET

Be sure to follow the Registrar of Voters on  
Instagram, Facebook, X, and YouTube.



# Assembly District 63 Special General Election

## ***California State Assembly, 63rd District Vacancy***

Governor Newsom issued a proclamation for a Special General Election to be held on August 26, 2025 to fill a vacancy in the 63rd Assembly District.

In a special vacancy election, like the one in Assembly District 63, if no candidate receives 50% +1 vote of the total votes cast (a simple majority), then a runoff election will be scheduled for August 26, 2025. If no candidate receives the required number of votes, then the top two candidates appear on the ballot for the August 26, 2025 Special General Election.

## ***Elections in California***

The Top Two Candidates Open Primary Act, which took effect January 1, 2011, requires that all candidates for a voter-nominated office be listed on the same ballot. Previously known as partisan offices, voter-nominated offices are state legislative offices, U.S. congressional offices, and state constitutional offices. Only the two candidates receiving the most votes—regardless of party preference—move on to the general election regardless of vote totals.

If one candidate receives more than 50% of the votes cast at the special primary election, he or she will be elected to fill the vacancy and no special general election will be held.

Write-in candidates for voter-nominated offices can only run in the primary election. However, a write-in candidate can only move on to the general election if the candidate is one of the top two vote-getters in the primary election. Additionally, there is no independent nomination process for a general election.

**California law requires that the following information be printed in this pamphlet.**

## ***Voter-Nominated Offices***

Political parties are not entitled to formally nominate candidates for voter-nominated offices at the primary election. A candidate nominated for a voter-nominated office at the primary election is the nominee of the people and not the official nominee of any party at the general election. A candidate for nomination to a voter-nominated office shall have his or her party preference, or lack of party preference, stated on the ballot, but the party preference designation is selected solely by the candidate and is shown for the information of the voters only. It does not mean the candidate is nominated or endorsed by the party designated, or that there is an affiliation between the party and candidate, and no candidate nominated by the voters shall be deemed to be the officially nominated candidate of any political party. In the County Voter Information Guide, parties may list the candidates for voter-nominated offices who have received the party's official endorsement.

Any voter may vote for any candidate for a voter-nominated office, if they meet the other qualifications required to vote for that office. The top two vote-getters at the primary election move on to the general election for the voter-nominated office even if both candidates have specified the same party preference designation. No party is entitled to have a candidate with its party preference designation move on to the general election, unless the candidate is one of the two highest vote-getters at the primary election.

If one candidate receives more than 50% of the votes cast at the special primary election, he or she will be elected to fill the vacancy and no special general election will be held.



## Vote Centers

**Dates and Hours:** \*August 16<sup>th</sup> – August 25<sup>th</sup>, 9:00am - 5:00pm.  
 \*\*August 23<sup>rd</sup> – August 25<sup>th</sup>, 9:00am - 5:00pm.  
 \*\*\*July 28<sup>th</sup> – August 25<sup>th</sup>, 8:00am - 5:00pm.  
 August 16<sup>th</sup> – August 17<sup>th</sup>, 9:00am - 5:00pm.  
 August 23<sup>rd</sup> – August 24<sup>th</sup>, 9:00am - 5:00pm.  
**All** sites open Election Day, August 26<sup>th</sup>, 7:00am - 8:00pm.



Find Your Nearest Location

Canyon Lake Golf & Country Club**	Magnolia Room	32001 Railroad Canyon Road	Canyon Lake, CA	92587
Islamic Society of Corona*	Multi-Purpose Room	465 Santana Way	Corona, CA	92881
Eleanor Roosevelt High School**	Library Conference Room	7447 Scholar Way	Eastvale, CA	92880
Lakeland Village Community Center**	Dance Room	16275 Grand Avenue	Lake Elsinore, CA	92530
Outlets at Lake Elsinore*	154B	17600 Collier Avenue, Building F	Lake Elsinore, CA	92530
Menifee Library**	Community Room	28798 La Piedra Road	Menifee, CA	92584
Sun City Civic Association*	Trophy Room	26850 Sun City Boulevard	Menifee, CA	92586
Norco Library*	Community Room	3240 Hamner Avenue, #101B	Norco, CA	92860
County of Riverside Registrar of Voters***	Lobby	2720 Gateway Drive	Riverside, CA	92507
Lake Mathews Community Room**	Community Room	16453 El Sobrante Road	Riverside, CA	92503
Orange Terrace Library*	Community Room	20010 Orange Terrace Parkway	Riverside, CA	92508
UCR Student Health & Wellness Building**	1316 Conference Room	388 W Linden Street, Building #834	Riverside, CA	92507
Woodcrest Library*	Community Room	16625 Krameria Avenue	Riverside, CA	92504



## Drop-Off Locations

**Dates and Hours:** \*July 28<sup>th</sup> – August 25<sup>th</sup>, Monday - Friday, 10:00am - 3:00pm.  
 \*\*July 28<sup>th</sup> – August 25<sup>th</sup>, during regular city business hours.  
 \*\*\*The Registrar of Voters office secure and monitored drop boxes are available 24/7 starting July 28<sup>th</sup> – August 25<sup>th</sup>, and on Election Day, close at 8:00pm.  
**All** sites open Election Day, August 26<sup>th</sup>, 7:00am - 8:00pm.



Find Your Nearest Location

Canyon Lake City Hall**	31516 Railroad Canyon Road	Canyon Lake, CA	92587
Auburndale Community Center*	1045 Auburndale Street	Corona, CA	92878
Dos Lagos Golf Course*	4507 Cabot Drive	Corona, CA	92883
Islamic Society of Corona*	465 Santana Way	Corona, CA	92881
Lake Center at Trilogy at Glen Ivy*	24503 Trilogy Parkway	Corona, CA	92883
Eleanor Roosevelt High School*	7447 Scholar Way	Eastvale, CA	92880
Philistine Rondo School of Discovery*	14977 Walters Street	Eastvale, CA	92880
Lake Elsinore City Hall**	130 S Main Street	Lake Elsinore, CA	92530
Lakeland Village Community Center*	16275 Grand Avenue	Lake Elsinore, CA	92530
Outlets at Lake Elsinore*	17600 Collier Avenue, Building F, 154B	Lake Elsinore, CA	92530
Shepherd of Life Lutheran Church*	30400 Grand Avenue	Lake Elsinore, CA	92530
Marion V. Ashley Community Center*	25625 Briggs Road	Menifee, CA	92585
Menifee City Hall**	29844 Haun Road	Menifee, CA	92586
Menifee Library*	28798 La Piedra Road	Menifee, CA	92584
Sun City Civic Association*	26850 Sun City Boulevard	Menifee, CA	92586
Norco City Hall**	2870 Clark Avenue	Norco, CA	92860
Norco Library*	3240 Hamner Avenue, #101B	Norco, CA	92860
County of Riverside Registrar of Voters***	2720 Gateway Drive	Riverside, CA	92507
Lake Mathews Community Room*	16453 El Sobrante Road	Riverside, CA	92503
Orange Terrace Library*	20010 Orange Terrace Parkway	Riverside, CA	92508
School of Career Education-Riverside County Office of Education*	2100 E Alessandro Boulevard	Riverside, CA	92508
UCR Student Health & Wellness Building*	388 W Linden Street, Building #834	Riverside, CA	92507
Woodcrest Library*	16625 Krameria Avenue	Riverside, CA	92504



## Voter's Information Guide Section

### • NO CANDIDATE STATEMENTS SUBMITTED

---

#### Campaign Finance Reform

---

Among all state legislative candidates appearing on ballots in Riverside County, the following persons have pledged to abide by campaign spending limits as specified in the California Government Code. Candidates agreeing to the limits have the opportunity to publish a statement of qualifications in the local County Voter Information Guide.

#### STATE ASSEMBLY, 63RD DISTRICT

Natasha Johnson, Republican  
Chris Shoults, Democratic

---

#### Party Endorsements

Elections Code § 13302 (b)

---

The County Elections Official shall print a list of all candidates for Voter-Nominated Offices that are endorsed by the following qualified political parties:

#### AMERICAN INDEPENDENT PARTY

Natasha Johnson, Member of the State Assembly,  
63rd District

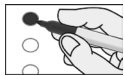
#### REPUBLICAN PARTY

Natasha Johnson, Member of the State Assembly,  
63rd District

SAMPLE BALLOT / BOLETA DE MUESTRA

BT - 1

ASSEMBLY DISTRICT 63 SPECIAL GENERAL ELECTION  
ELECCIÓN GENERAL ESPECIAL DEL DISTRITO DE LA ASAMBLEA 63  
RIVERSIDE COUNTY / CONDADO DE RIVERSIDE  
AUGUST 26, 2025 / 26 DE AGOSTO DE 2025



**Instructions to Voters:** To vote, completely fill in the oval next to your choice, like the example to the left. Use a black ink pen to mark your ballot. DO NOT USE RED INK.

**Instrucciones para los Votantes:** Para votar, completamente rellene el óvalo junto a su deseo, como el ejemplo a la izquierda. Use un bolígrafo de tinta negra para marcar su boleta. NO USE TINTA ROJA.

VOTER-NOMINATED OFFICES

All voters may vote in these contests. Candidates display a party preference (or None) for the information of voters. This is not a party endorsement or approval.

CARGOS NOMINADOS POR LOS VOTANTES

Todos los votantes pueden votar en estas contiendas. Se muestra la preferencia de los candidatos por un partido (o Ninguna) para informar a los votantes. Esto no es un respaldo ni aprobación de un partido.

VOTER-NOMINATED OFFICES  
CARGOS NOMINADOS POR LOS VOTANTES

MEMBER OF THE STATE ASSEMBLY  
MIEMBRO DE LA ASAMBLEA ESTATAL

63rd Assembly District  
Distrito de la Asamblea Núm. 63

Vote for One  
Vote por Uno

NATASHA JOHNSON



Party Preference: Republican  
Preferencia de Partido: Republicano  
Councilmember / Small Businesswoman  
Miembro del Concejo / Pequeña Empresaria

CHRIS SHOULTS



Party Preference: Democratic  
Preferencia de Partido: Demócrata  
Educator / Business Owner  
Educador / Propietario de Empresa

END OF BALLOT / FIN DE LA BOLETA - BT - 1



## Voter Registration Resources

### Voter Registration and Status

You can complete a paper registration form or visit [www.registertovote.ca.gov](http://www.registertovote.ca.gov) to register online. Eligible 16 and 17 year olds can pre-register to vote and have their registration become active once they turn 18!

To check your voter registration status or find additional information about upcoming elections, visit [www.voterstatus.sos.ca.gov](http://www.voterstatus.sos.ca.gov).

Scan the QR code or call (951) 486-7200 or (800) 773-8683 for more information.



Scan for quick  
access



### Same Day Voter Registration

Want to vote but missed the voter registration deadline?

Conditional Voter Registration (CVR) or “same day voter registration” is available at the Registrar of Voters office and at all Vote Centers in Riverside County through Election Day!



### Voter Update and Cancellation Form

Visit [www.voteinfo.net](http://www.voteinfo.net) to complete and submit a Voter Update and Cancellation Form if you:

- Need to correct the spelling of your name as registered
- Need to update your mailing address
- Need to cancel your voter registration



Scan for quick  
access

### California Motor Voter

Eligible applicants completing a Department of Motor Vehicles (DMV) transaction will be automatically registered to vote by the California Secretary of State, unless they choose to “opt out” of automatic voter registration.

Drivers with an AB 60 driver’s license are not eligible to register and vote.

To learn more, visit [www.sos.ca.gov/elections/california-motor-voter](http://www.sos.ca.gov/elections/california-motor-voter).







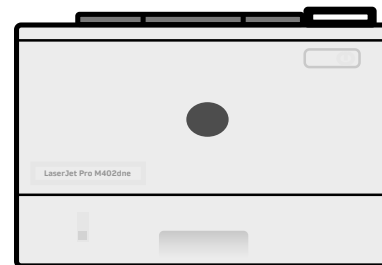
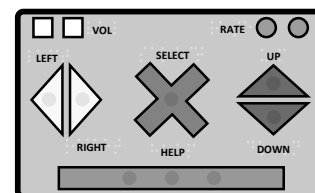
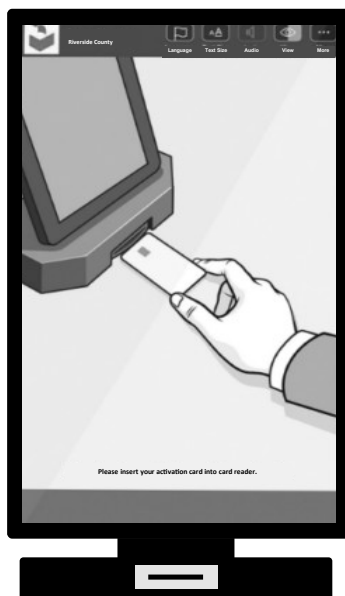
## Accessible Voting Options

### Accessible Voting Unit (AVU)

The AVU is a ballot marking device that is easy to use and is available to all voters.

- Touchscreen display
- Equipped with optional control that includes Braille and audio headset
- Print, review, and cast your ballot
- Available at all Vote Centers in Riverside County

Translated materials may be available, ask an Election Officer for assistance

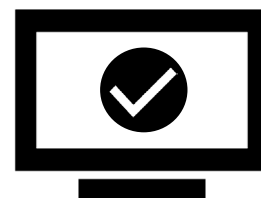


### Remote Accessible Vote by Mail (RAVBM)

The (RAVBM) system is a tool available to voters who need assistance reviewing and marking their ballot.

#### How Can I Vote Using the RAVBM System?

1. Access the RAVBM link on [www.voteinfo.net](http://www.voteinfo.net) starting July 28, 2025
2. Download, mark, and print your ballot
3. Seal and sign the ballot envelope
4. Return your ballot



### Curbside Voting

Curbside voting is available at all Vote Centers in Riverside County.

Please call (877) 663-9906 for assistance.



# VOTER BILL OF RIGHTS

---

## YOU HAVE THE FOLLOWING RIGHTS:

- 1** **The right to vote if you are a registered voter.**  
You are eligible to vote if you are:
  - a U.S. citizen living in California
  - at least 18 years old
  - registered where you currently live
  - not currently serving a state or federal prison term for the conviction of a felony
  - not currently found mentally incompetent to vote by a court
- 2** **The right to vote if you are a registered voter even if your name is not on the list.** You will vote using a provisional ballot. Your vote will be counted if elections officials determine that you are eligible to vote.
- 3** **The right to vote if you are still in line when the polls close.**
- 4** **The right to cast a secret ballot** without anyone bothering you or telling you how to vote.
- 5** **The right to get a new ballot if you have made a mistake,** if you have not already cast your ballot. You can:
  - Ask an elections official at a polling place** for a new ballot,
  - Exchange your vote-by-mail ballot** for a new one at an elections office, or
  - at your polling place, or**
  - Vote using a provisional ballot.**
- 6** **The right to get help casting your ballot** from anyone you choose, except from your employer or union representative.
- 7** **The right to drop off your completed vote-by-mail ballot at any polling place** in California.
- 8** **The right to get election materials in a language other than English** if enough people in your voting precinct speak that language.
- 9** **The right to ask questions to elections officials about election procedures** and watch the election process. If the person you ask cannot answer your questions, they must send you to the right person for an answer. If you are disruptive, they can stop answering you.
- 10** **The right to report any illegal or fraudulent election activity** to an elections official or the Secretary of State's office.
  -  On the web at **[www.sos.ca.gov](http://www.sos.ca.gov)**
  -  By phone at **(800) 345-VOTE (8683)**
  -  By email at **[elections@sos.ca.gov](mailto:elections@sos.ca.gov)**

---

**IF YOU BELIEVE YOU HAVE BEEN DENIED ANY OF THESE RIGHTS, CALL THE SECRETARY OF STATE'S  
CONFIDENTIAL TOLL-FREE VOTER HOTLINE AT (800) 345-VOTE (8683).**

---

FROM



DID YOU SIGN YOUR REQUEST?

**REGISTRAR OF VOTERS  
2724 GATEWAY DRIVE  
RIVERSIDE CA 92507-0923**



## ACCOMMODATIONS FOR VOTERS WITH DISABILITIES

All Vote Centers are accessible to voters who are physically disabled. Please be advised of the following alternate ways you may cast your ballot.

- **By Mail** - Your ballot must be received at the Registrar of Voters office no later than 8:00 p.m. on Election Day or be postmarked on or before Election Day and received no later than seven days after Election Day to be counted. You may request a Vote-by-Mail ballot for all future Elections. Simply contact the Registrar of Voters office by calling (951) 486-7200, (800) 773-VOTE (8683), California Relay Service (Dial 711).
- **Early Voting** - You may vote at the Registrar of Voters office July 28 - August 25, Monday through Friday, 8:00 a.m. to 5:00 p.m.; August 16 - August 17, 9:00 a.m. to 5:00 p.m., and August 23 - August 24, 9:00 a.m. to 5:00 p.m.; and Election Day, August 26, 7:00 a.m. to 8:00 p.m. Please visit our website at [www.voteinfo.net](http://www.voteinfo.net) for additional early voting locations and information.
- **Remote Accessible Vote by Mail Ballot (RAVBM)** - Accessible Vote-by-Mail provides an accessible option for voters to mark their ballots privately and independently. To complete a RAVBM ballot visit [www.voteinfo.net](http://www.voteinfo.net). Your completed ballot and signed Oath of the Voter must be returned to the Registrar of Voters office no later than 8:00 p.m. on Election Day or be postmarked on or before Election Day and received no later than seven days after Election Day to be counted.
- **Curbside Voting on Election Day** - If you are unable to enter the location due to a physical disability, you may request Curbside Voting at any Vote Center. Curbside Voting doorbells and signs are available at all Vote Centers. If you require Curbside Voting assistance you may call (877) 663-9906 before going to a Vote Center and/or when you arrive at the facility. An Election Officer will be contacted prior to your arrival to meet you at the curb.
- **Large Print State Voter Information Guide** - The California Secretary of State's office will not be providing a State Voter Information Guide. However, if you prefer a Large Print County Voter Information Guide, you may request one by contacting the Registrar of Voters office at (951) 486-7200, (800) 773-VOTE (8683), or through the California Relay Service (Dial 711).
- **Disability Rights California** will operate a statewide hotline on August 26, Election Day, from 7:00 a.m. to 8:00 p.m. The phone number is (888) 569-7955.

REGISTRAR OF VOTERS  
2724 GATEWAY DRIVE  
RIVERSIDE, CA 92507-0918



NONPROFIT  
U.S. POSTAGE  
**PAID**  
Registrar of Voters  
Riverside

**REQUEST TRANSLATED ELECTION MATERIAL**  
**VOTER INFORMATION:**

NAME AS REGISTERED

RESIDENCE ADDRESS AS REGISTERED

CITY STATE ZIP

**MAIL MATERIALS TO:**

ADDRESS (IF DIFFERENT)

CITY STATE ZIP

I declare, under penalty of perjury, that the information provided is true and correct to the best of my knowledge.

**SIGNATURE  
REQUIRED**

SIGNATURE OF VOTER

DATE

33-BCov 8-26-2025

Translated election materials are available for select precincts. If you would like to receive materials in another language, complete and return this postcard to the Registrar of Voters office. Translated materials will also be available at the Registrar of Voters office and at all Vote Centers.

I wish to receive election materials in:

☐ Español-Spanish

I wish to receive translated reference ballots in: (select one only)

☐ 한국어 - Korean

☐ Tiếng Việt - Vietnamese

☐ Tagalog - Tagalog

☐ 中文 - Chinese

↓ POSTMASTER DELIVER TO ↓

**OPT-IN TO VIEW YOUR  
COUNTY VOTER INFORMATION  
GUIDE ONLINE!**

**You can view all future  
County Voter Information Guides  
online with 24/7 access at your  
convenience.**

**It's easy and great for the  
environment.**

Please visit our website at [www.voteinfo.net](http://www.voteinfo.net)  
or call (951) 486-7200 or (800) 773-VOTE (8683)

**BALLOT  
TYPE**

**001**

**VOTE EARLY**  
**IT'S QUICK**  
**IT'S EASY**  
**IT'S CONVENIENT**  
**GET OUT OF LINE ON ELECTION DAY!**  
**VOTE-BY-MAIL**

↓ LOCATION OF YOUR VOTE CENTER ↓



ACCESS?

All voters will receive a ballot in the mail.

A list of available vote center locations is  
printed in this Voter Information Guide.